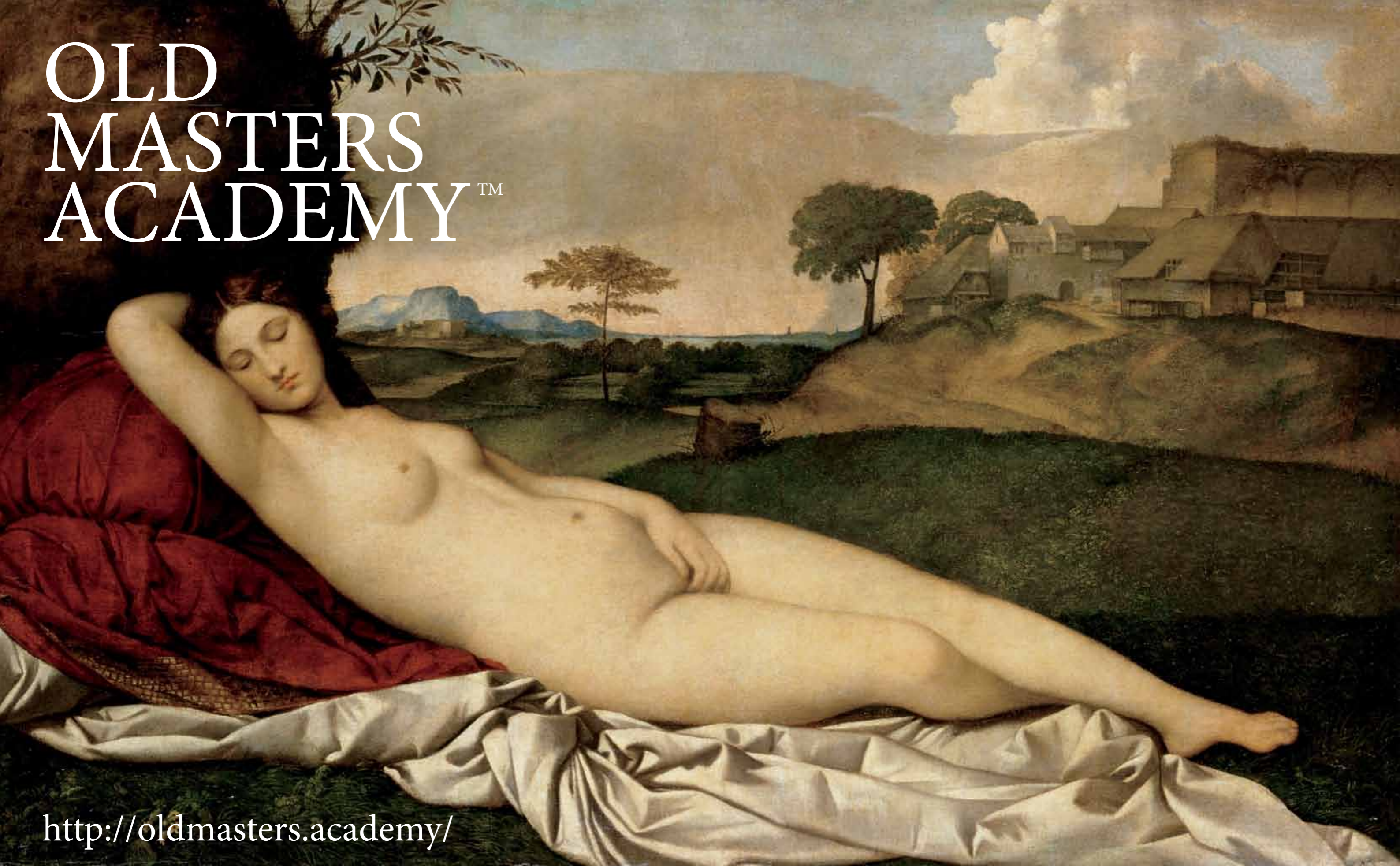


OLD  
MASTERS  
ACADEMY™



<http://oldmasters.academy/>

Worksheets & Templates



Old Masters .Academy  
Worksheet 1 (Size: A3)

TITIAN Palette (opaque)

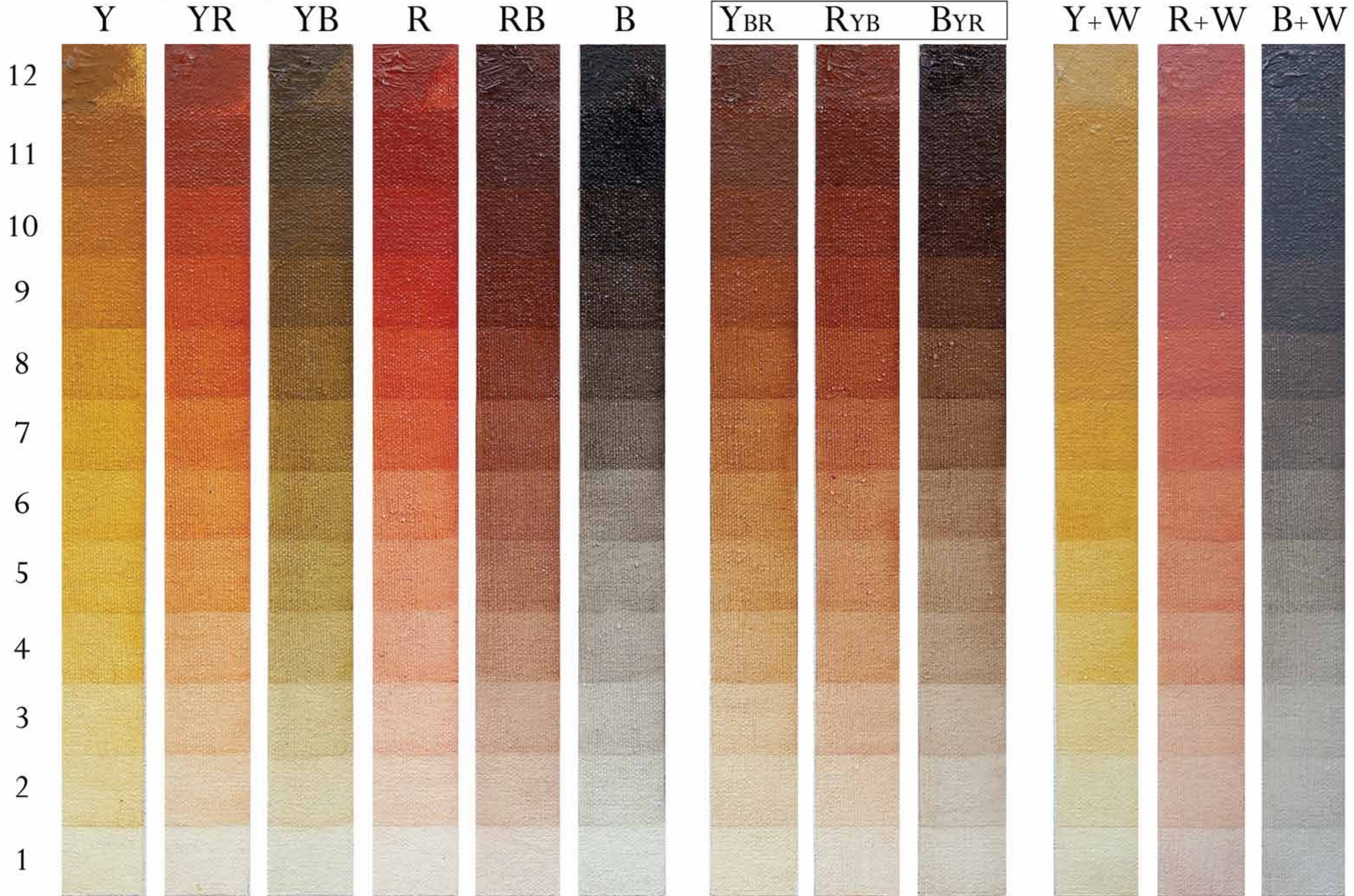
Y - Yellow Ochre    B - Mars Black  
R - Venetian Red    W - Titanium White





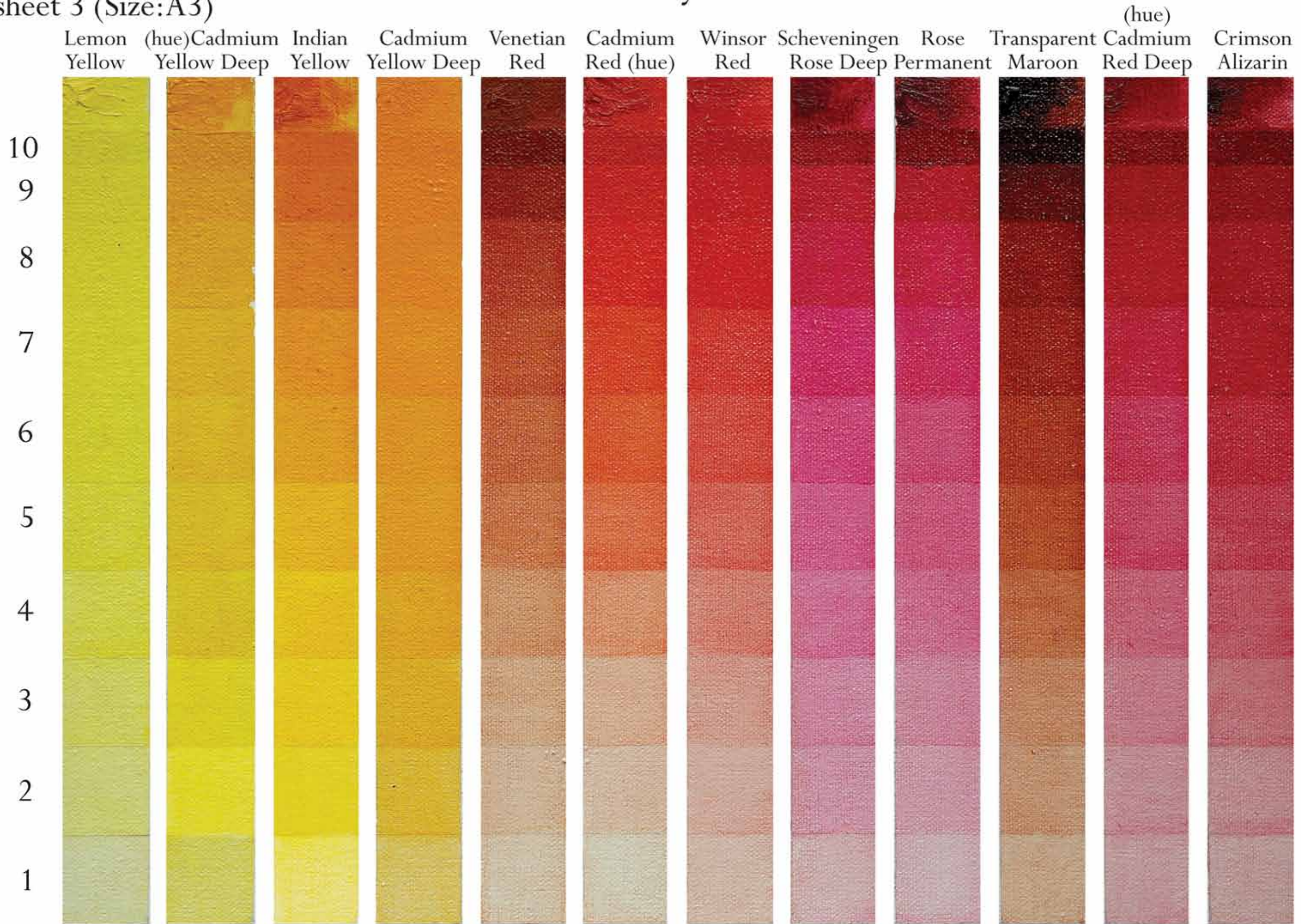
# TITIAN Palette (glazing)

Y - Yellow Ochre    B - Mars Black  
R - Venetian Red    W - Titanium White





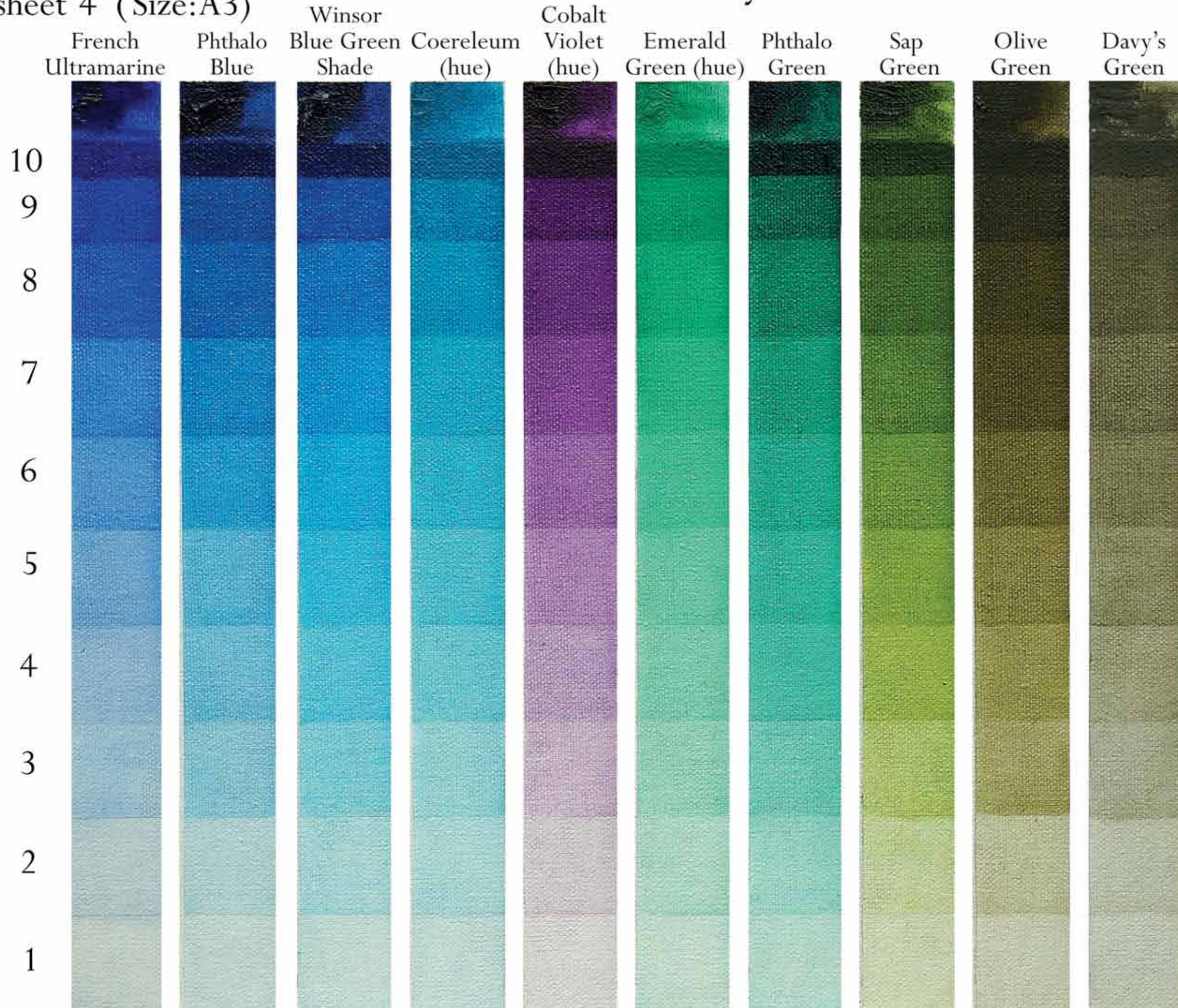
# GLAZING intensity: Warm Colors







GLAZING intensity: Cold Colors 1



GLAZING with  Transparent Colors &  Opaque

over DARK Underpainting

over LIGHT Underpainting

Glazes

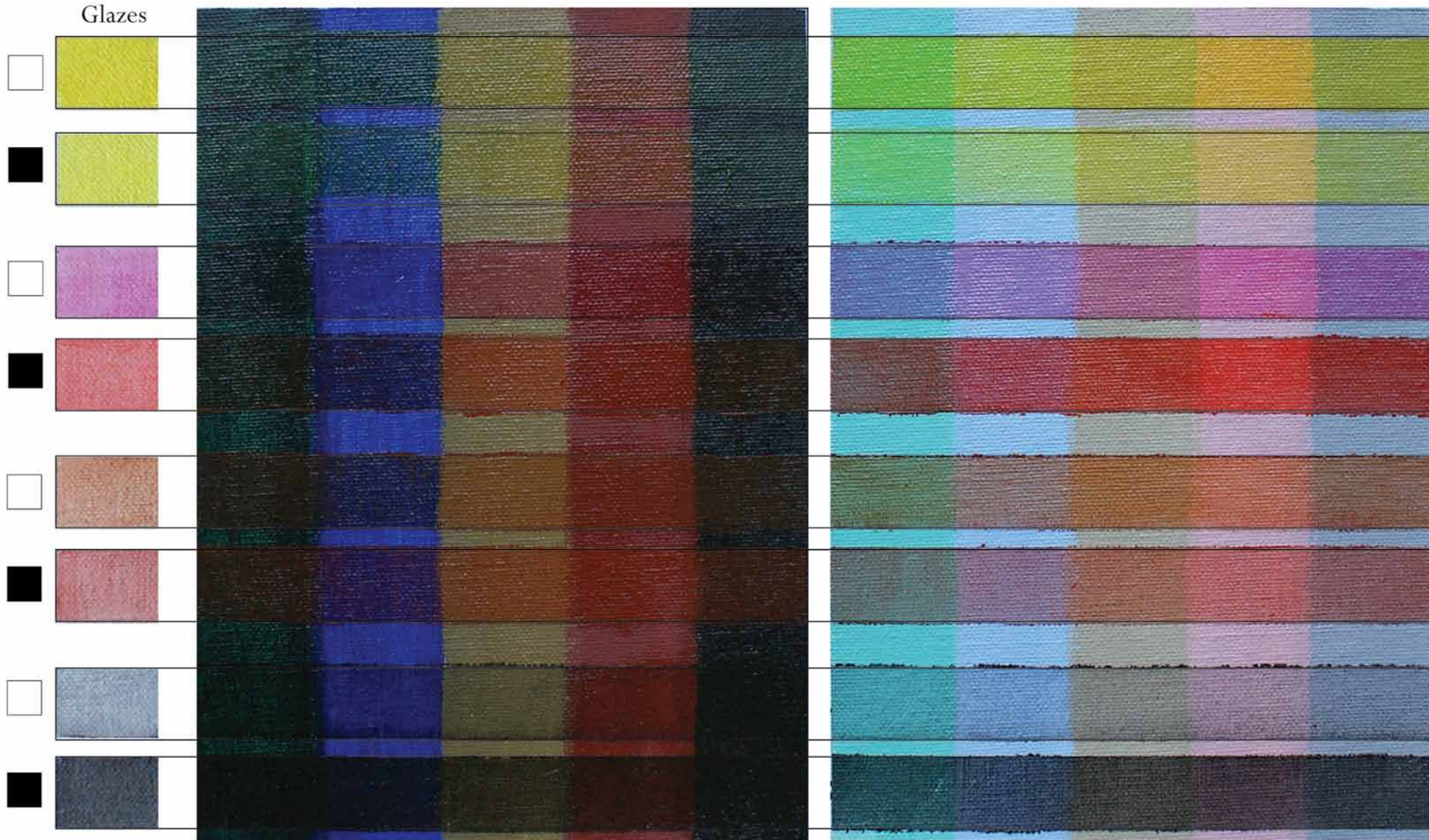


	over DARK Underpainting	over LIGHT Underpainting
<input type="checkbox"/>		
<input checked="" type="checkbox"/>		
<input type="checkbox"/>		
<input checked="" type="checkbox"/>		
<input type="checkbox"/>		
<input checked="" type="checkbox"/>		
<input type="checkbox"/>		
<input checked="" type="checkbox"/>		

GLAZING with  Transparent Colors &  Opaque

over DARK Underpainting

over LIGHT Underpainting



# BROWN Colors (glazing)

9

8

7

6

5

4

3

2

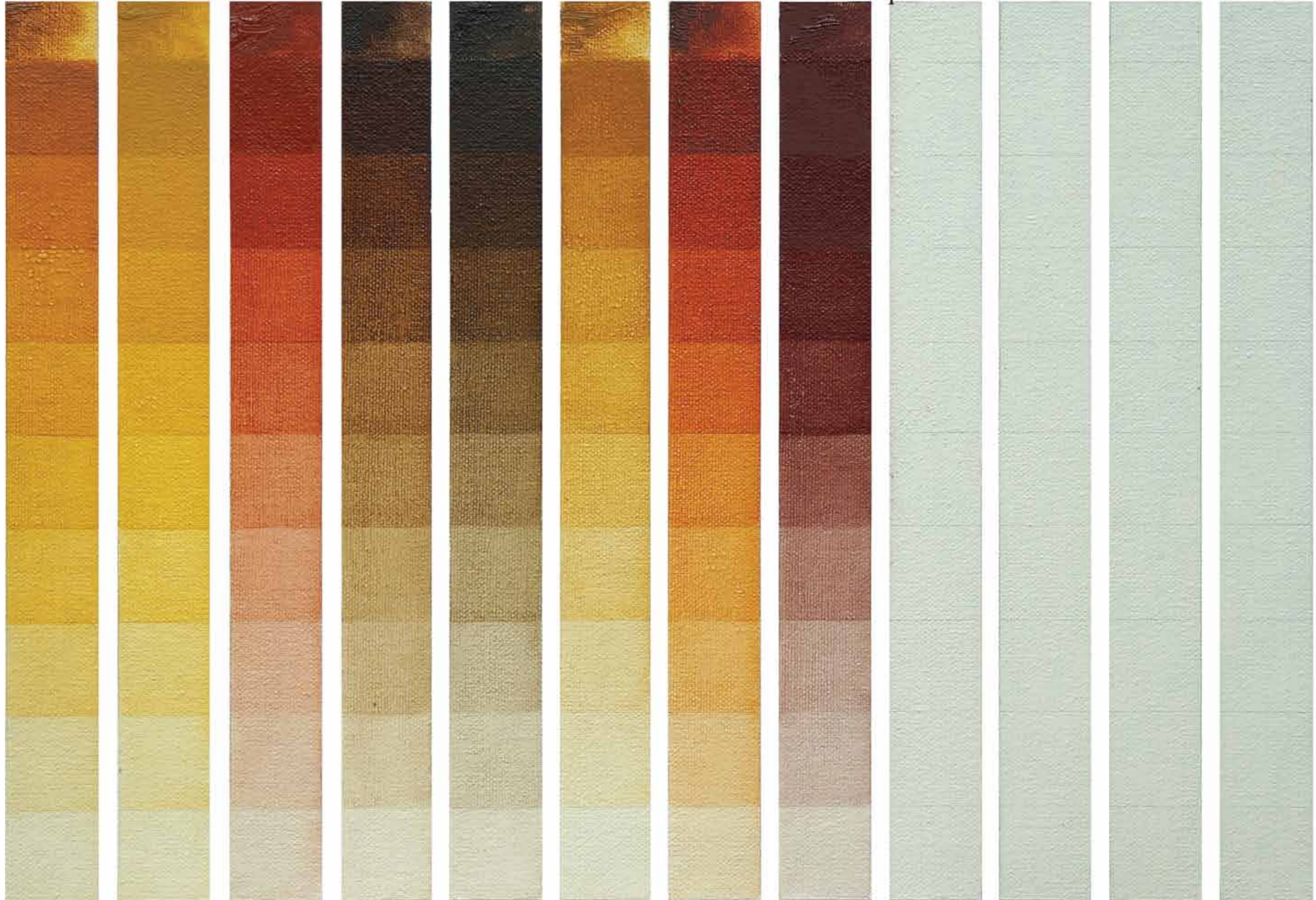
1

A grid of 12 empty rectangular boxes, arranged in 3 rows and 4 columns. The boxes are intended for drawing or coloring. The grid is defined by thin black lines.

# BROWN Colors (glazing)

Transparent Gold Ochre    Yellow Ochre    Venetian Red    Vandyke Brown    Raw Umber    Raw Sienna    Burnt Sienna    Mars Violet Deep

9  
8  
7  
6  
5  
4  
3  
2  
1





# BLACK Colours (opaque & glazing )

	Payne's Gray	Ivory Black	Lamp Black	Mars Black	Karelian Black	Charcoal Grey	Payne's Gray	Ivory Black	Lamp Black	Mars Black	Karelian Black	Charcoal Grey
100												
75												
50												
25												
5												
2												





## PAIN T CONSISTENCY & MEDIUMS

Paint  
form Tube



75%

50%

25%

10%

5%

Turpentine



Linseed Oil



Linseed Oil  
Stand



Oil Glaze  
Medium  
(Seymour)



Artists'  
Painting  
Medium  
(W&N)



Liquin  
Original


















Liquin  
Fine Detail


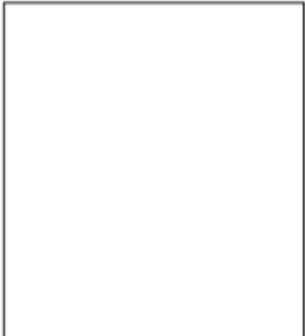




## ALLA PRIMA / WET-on-WET


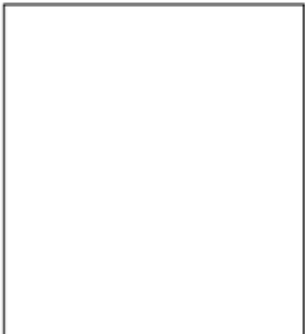


### BACKGROUND:

	Impasto	From Tube	Paint + Oil	Dry Brush	Turpentine
1st AllaPrima Layer:					
Paint form Tube					
Paint + Oil					

### TRANSITION between two colors:

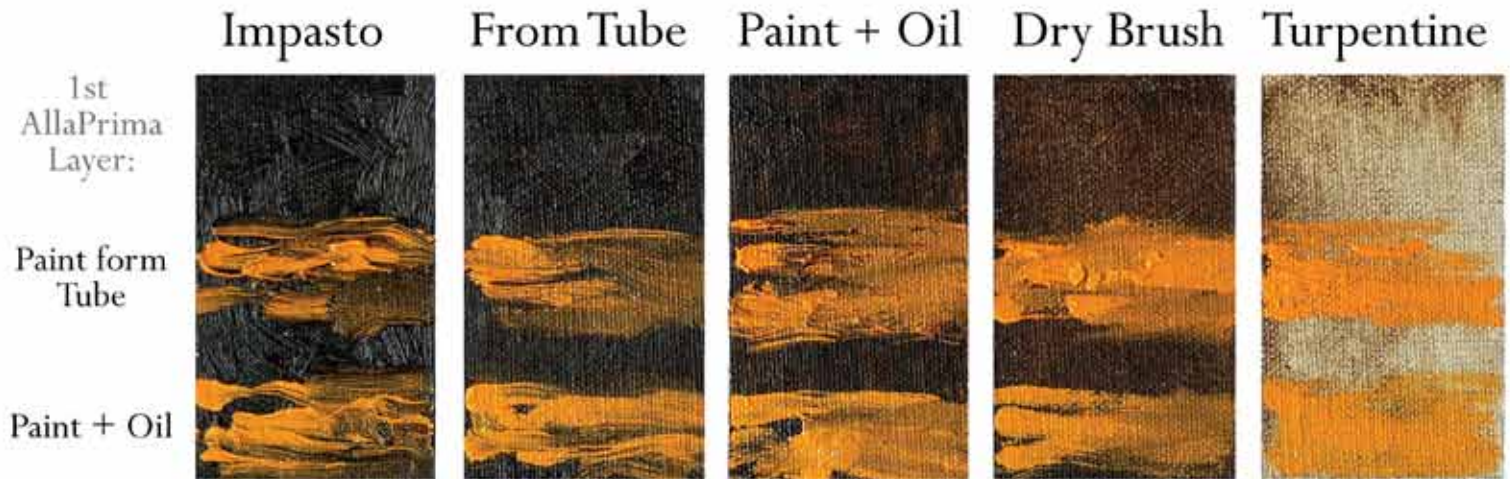
Wet-on- Wet ↓↑	Wet-on- Wet ↔	Wet-on-Dry, Dry Brush	Wet-on-Dry, Paint + Medium
			

### BORDERS between two colors:

Mechanical Spread	Ridges	Clean Brush next to edge	Background visible
			

## ALLA PRIMA / WET-on-WET

### BACKGROUND:



### TRANSITION between two colors:



### BORDERS between two colors:



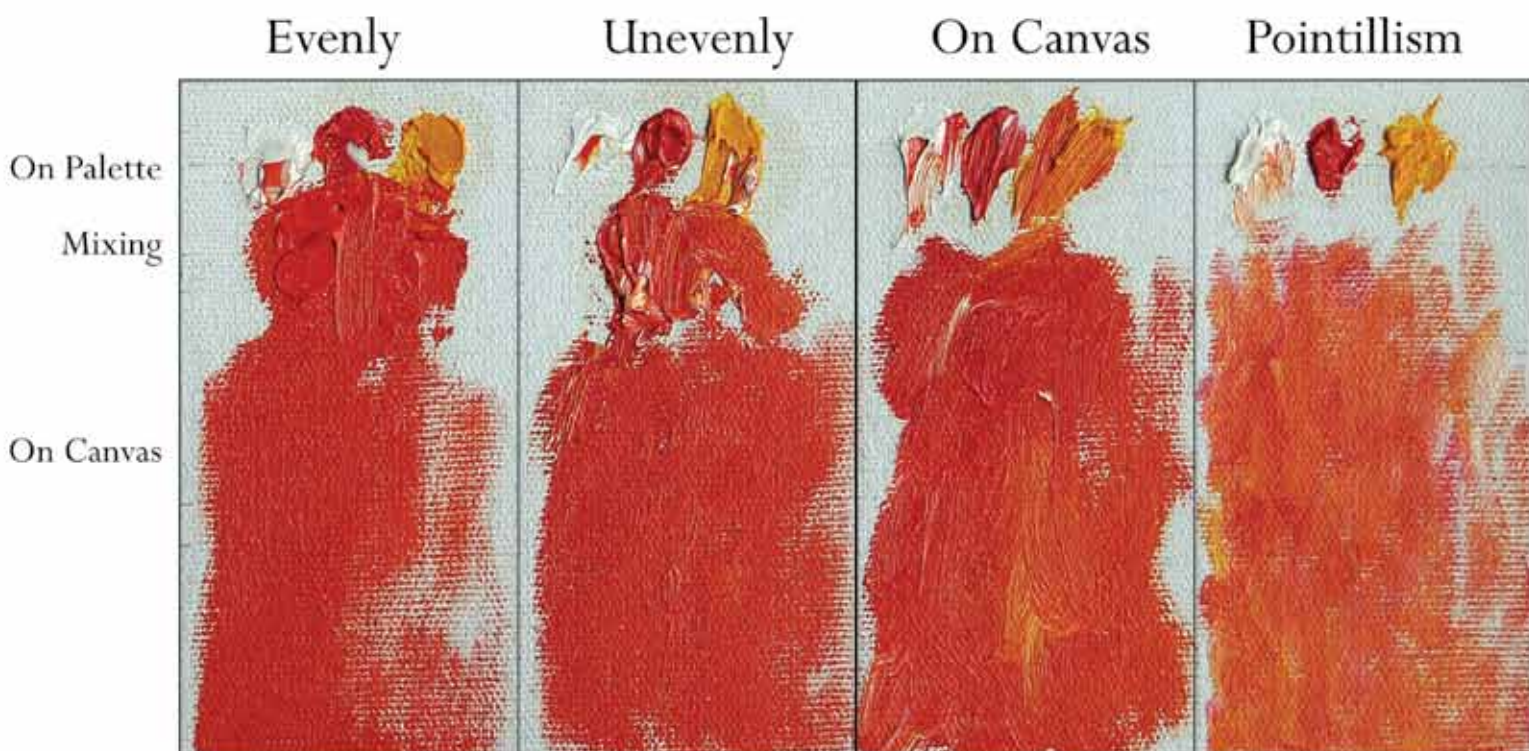
## MECHANICAL / PHYSICAL MIXING

	Evenly	Unevenly	On Canvas	Pointillism
On Palette Mixing				
On Canvas				

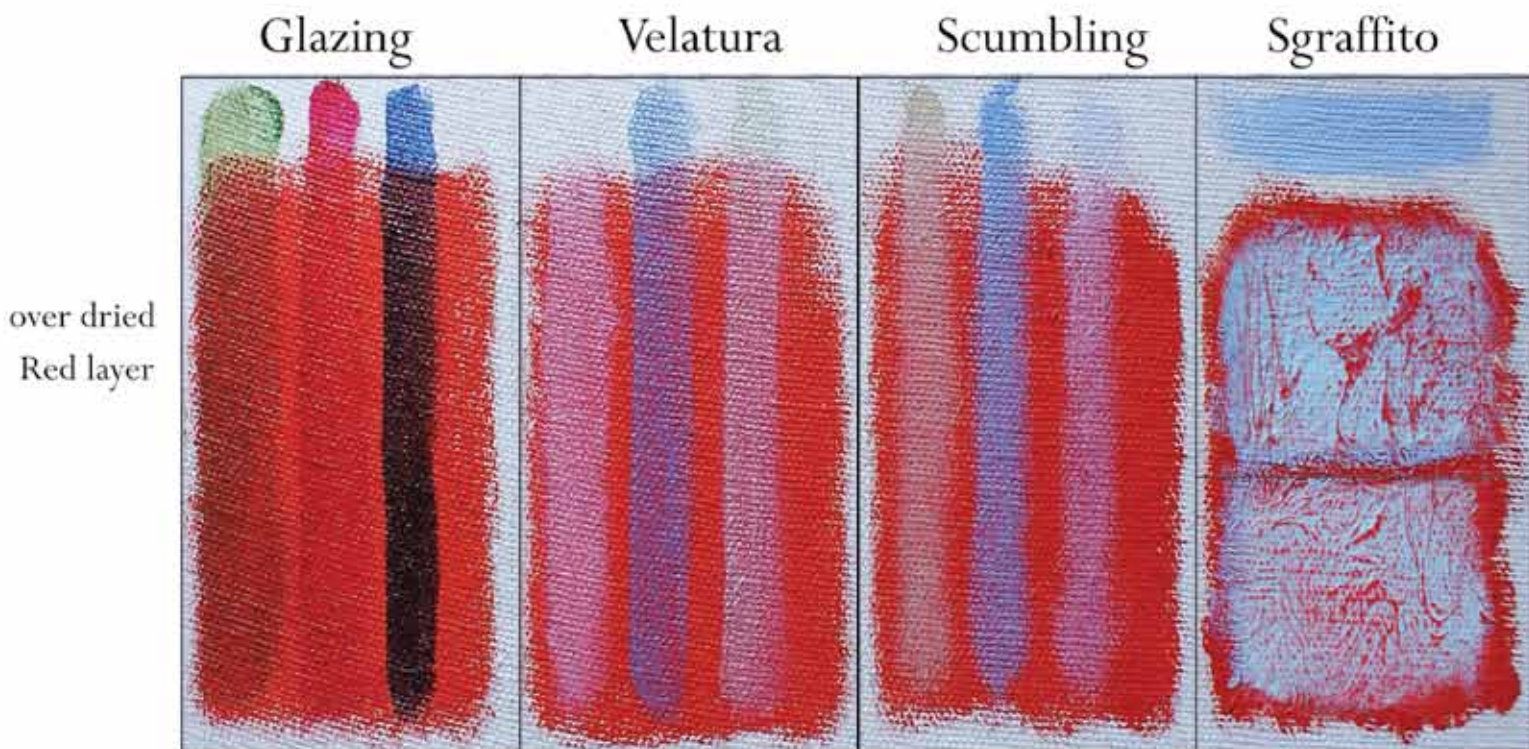
## OPTICAL MIXING

	Glazing	Velatura	Scumbling	Sgraffito
over dried Red layer				

## MECHANICAL / PHYSICAL MIXING



## OPTICAL MIXING



# SURFACE TEXTURE (Tooth)

## GLAZING:



--	--	--

## BRUSH STROKES:

Hog Brush

Mongoose Brush

--

## DRYBRUSH:

Hog Brush

Mongoose Brush

--	--

# SURFACE TEXTURE (Tooth)

## GLAZING:



## BRUSH STROKES:

Hog Brush

Mongoose Brush



## DRYBRUSH:

Hog Brush

Mongoose Brush

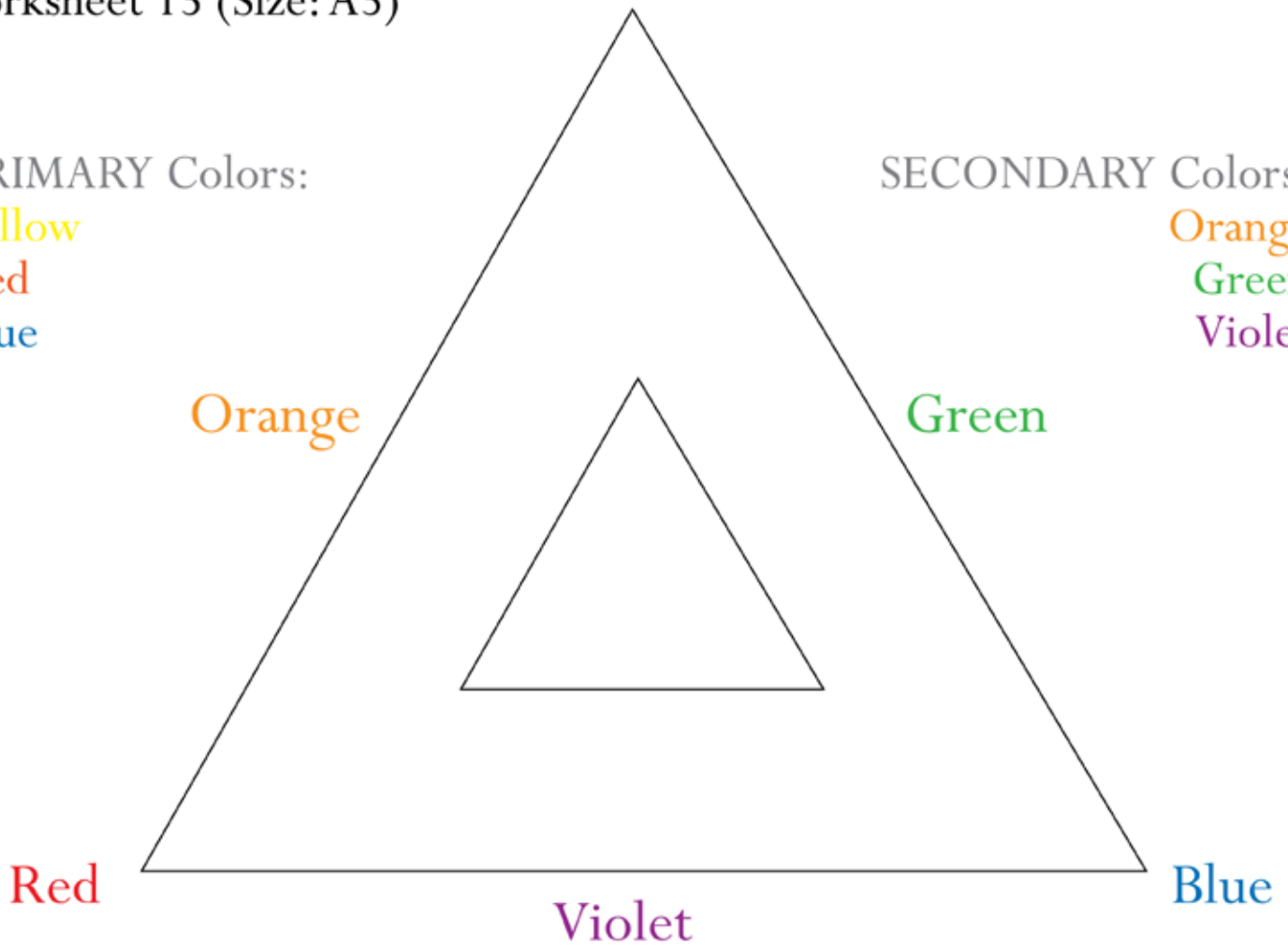
Yellow

PRIMARY Colors:

Yellow  
Red  
Blue

SECONDARY Colors:

Orange  
Green  
Violet



**HARMONY:**  
Related Colors

**CONTRAST:**  
Complementary Colors

Y - Yellow  
R - Red  
B - Blue  
O - Orange  
G - Green  
V - Violet

R

V

R

O

R

G

Y

G

Y

O

Y

V

B

V

B

G

B

O

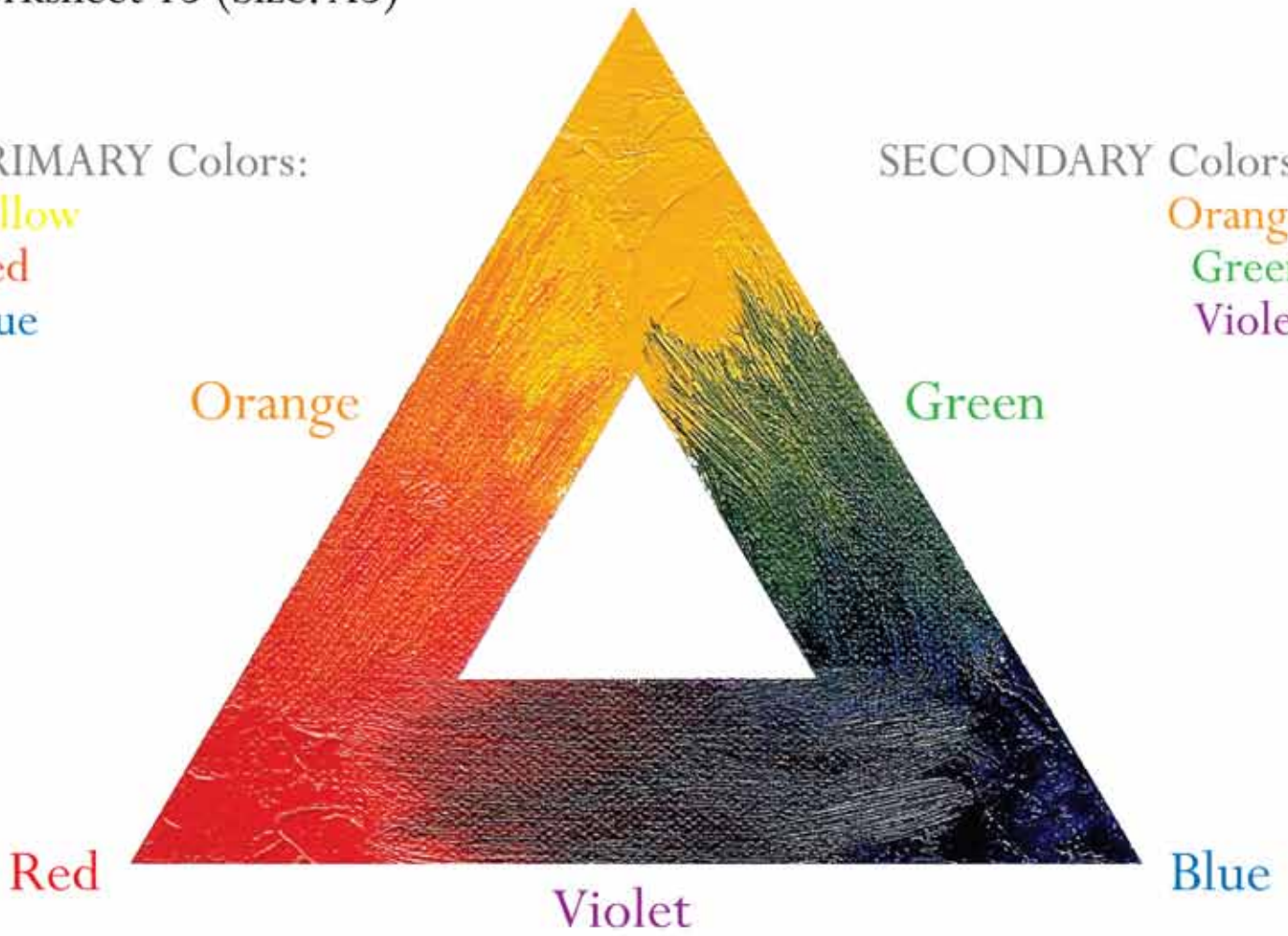


PRIMARY Colors:

Yellow  
Red  
Blue

SECONDARY Colors:

Orange  
Green  
Violet



HARMONY:  
Related Colors

CONTRAST:  
Complementary Colors

Y - Yellow  
R - Red  
Y - Blue  
O - Orange  
G - Green  
V - Violet



R



V



R



O



R



G



Y



G



Y



O



Y



V



B



V



B



G



B



O

# TERTIARY Colors

Primary **RYB**

Secondary **OVG**

R  
Y  
B

O  
V  
G

R  
Y  
B

O  
V  
G

R  
Y  
B

o  
V  
G

R  
Y  
B

O  
V  
G

## COMPLEMENTARY / OPPOSITE Colors

**RG**

**YV**

**BO**

R  
G

Y  
V

B  
O

R  
G

Y  
V

B  
O

R  
G

Y  
V

B  
O

# TERTIARY Colors



Primary **RYB**



Secondary **OVG**



## COMPLEMENTARY / OPPOSITE Colors



# Old Masters .Academy™ PALETTE

T ●		■ AA Titanium White *
●		◻ AA Zinc White
		◻ AA Unbleached Titanium
●		■ AA Lemon Yellow
		◻ (A or AA?) Yellow Lake
		◻ A Indian Yellow
●		◻ A Scarlet Lake
●		■ A Cadmium Red
		◻ AA Scheveningen Red Deep
T ●		◻ A Ultramarine Blue **
		◻ AA Phthalocyanine Blue
		◻ AA Phthalocyanine Green
T ●		◻ AA Yellow Ochre*
		◻ AA Yellow Ochre Deep
		◻ AA Transparent Gold Ochre
●		◻ AA Raw Sienna
		◻ AA Burnt Sienna
●		◻ AA Burnt Umber
T ●		■ AA Venetian Red *
T ●		■ AA Mars Black *
		◻ AA Charcoal Grey
		◻ AA Payne's Grey

T - Titian Palette

● - The most essential Colors

Transparency:

T S/T S/O O

A - Permanent  
AA - Extremely Permanent

# Old Masters .Academy™ PALETTE

T ●		■ AA Titanium White *
●		◻ AA Zinc White
●		◻ AA Unbleached Titanium
●		■ AA Lemon Yellow
		◻ (A or AA?) Yellow Lake
		◻ A Indian Yellow
●		◻ A Scarlet Lake
●		■ A Cadmium Red
		◻ AA Scheveningen Red Deep
T ●		◻ A Ultramarine Blue **
		◻ AA Phthalocyanine Blue
		◻ AA Phthalocyanine Green
T ●		◻ AA Yellow Ochre*
		◻ AA Yellow Ochre Deep
		◻ AA Transparent Gold Ochre
●		◻ AA Raw Sienna
		◻ AA Burnt Sienna
●		◻ AA Burnt Umber
T ●		■ AA Venetian Red *
T ●		■ AA Mars Black *
		◻ AA Charcoal Grey
		◻ AA Payne's Grey

T - Titian Palette

● - The most essential Colors

Transparency:

T S/T S/O O

A - Permanent  
AA - Extremely Permanent

